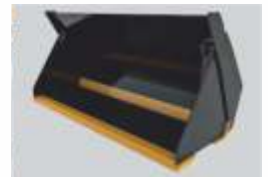




ATTACHMENTS >>>



Engine	Kirloskar
Gross Power	74.5 HP (54.8 kW)
Operating Weight	5,610 kg
Payload Capacity	18,00 kg
Standard Bucket	1.2 m ³

**818N
WHEEL LOADER**

TOUGH WORLD. TOUGH EQUIPMENT.

818N SPECIFICATIONS >>>



OPERATING WEIGHT 5610 KG

ENGINE

Kriloskar 4 Cylinder, High fuel efficient engine without compromising power.

Manufacturer	Kriloskar
Model	4R1190NA1
Emmission Regulation	CEV Stage IV
Gross Power	74.5 HP (54.8 kW) @ 2200 rpm
Peak Torque	300 N-m @ 1300 rpm
Displacement	4.76 L
Number of Cylinders	4

BUCKET RANGES

Heavy duty big buckets are designed to offer high breakout force and fill factor

Light Weight Material	2.0 m ³
General Purpose Bucket	1.2 m ³

TRANSMISSION

Heavy duty reliable transmission unit along with torque convertor

Make	Shantui
Transmission Type	Countershaft powershift
Torque Convertor	3 Elements-single stage
Number of Speed	Forward 2 / Reverse 2
Forward Speed F1 / F2	13 / 25 Km/hr
Reverse: R1 / R2	11/17 Km/hr

AXLES

Make	LiuGong
Type	Dry Type (Planetary Hub Reduction)
Axle Oscillation	Front Fixed and Rear ±11°

TIRES

Tire Size	16- 20-14PR
-----------	-------------

BRAKE SYSTEM

Service Brake	4 Wheel applied air over hydraulic with Independent circuit for front & rear axle
Parking Brake	Drum Brake Mechanical Actuation
Secondary Brake	Manually Applied on Low Pressure

HYDRAULIC SYSTEM

Efficient and reliable hydraulics having single pump for work implement and steering system generating flow for optimum performance.

Main Pump Type	Gear Pump
Main Relief Pressure	18 Mpa
Main Pump Flow	110 LPM
Cycle Time	8.8 Sec
Control	Single Pilot Lever
Cylinders	Double Acting

STEERING SYSTEM

Steering Type	Articulation
Pump Type	Gear Pump
Steering Relief Pressure	14 Mpa
Maximum Articulation Angle	± 38°

CABIN

Ergonomically designed cabin has 4 working cab lights, wipers, adjustable seat, single joystick operated hydraulics with hand rest, music system, large instrument panel for - (Fuel level gauge, turn indicators, engine tachometer, engine coolant temperature gauge, transmission oil temperature gauge, various status and warning indicators). Removable floor mat, laminated front glass, 02 External side view mirrors. AIS160 Compliant for safety and performance.

ELECTRICAL SYSTEM

System Voltage	12 V
Battery	12 V x 1

LOADER PERFORMANCE WITH STANDARD BUCKET 1.2 m³

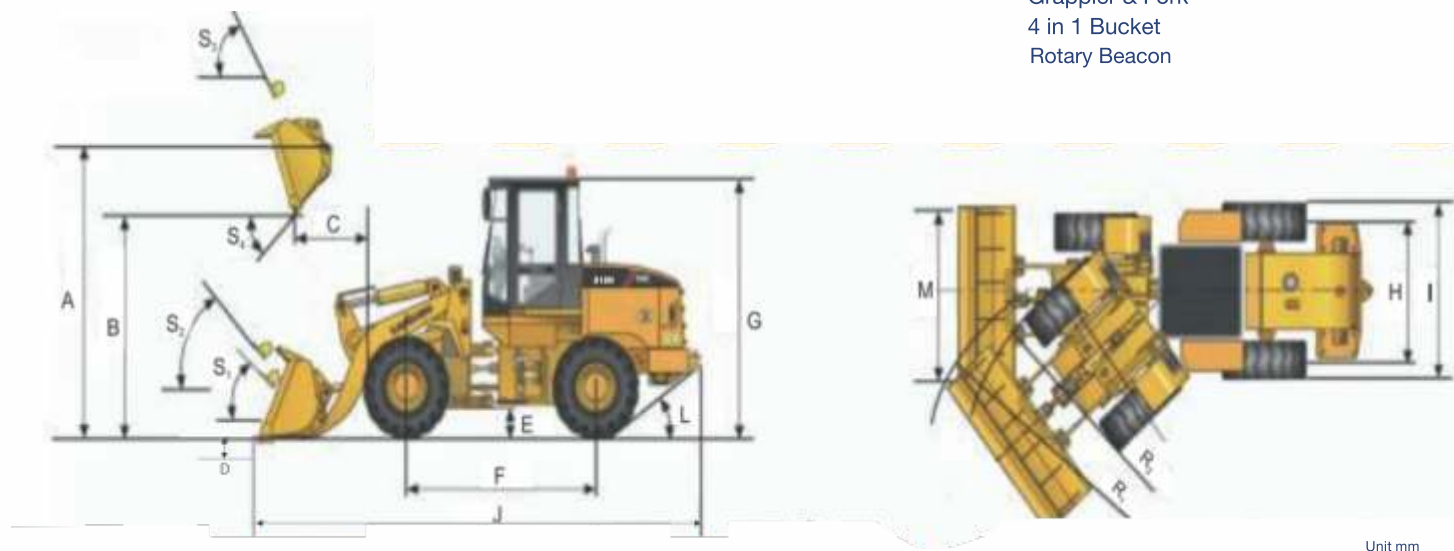
Tipping Load- Straight	4150 kg
Tipping Load- Full Turn	3670 kg
Bucket Breakout Force	55.4 kN
A-Hinge Pin Height, Fully Raised	3239 mm
B-Dumping Height, Fully Raised	2909 mm
C-Dumping Reach, Fully Raised	845 mm
D-Max. Digging Depth	40 mm
E-Min. Ground Clearance	285 mm
F-Wheel Base	2200 mm
G-Overall Height	2873 mm
H-Tread Width	1520 mm
I-Overall Width (Outside of Wheel)	1948 mm
J-Overall Length	5893 mm
L-Departure Angle	24°
M-Bucket Width	2202 mm
S1-Bucket Rollback at Ground Level	45°
S2-Bucket Rollback at Carry	51°
S3-Bucket Roll Back at Maximum	62°
S4-Maximum Dump Angle at Full Height	45°
R1-Turning Radius (Outside of Bucket)	6000 mm
R2-Turning Radius (Outside of Rear Wheel)	4725 mm

SERVICE CAPACITIES

Fuel Tank	100 L
Engine Oil	12 L
Cooling System	28 L
Transmission & Torque Convertor	18 L
Hydraulic System	78 L
Axle Oil Each	8 L

OPTIONAL

- Quick Coupler
- Grappler & Fork
- 4 in 1 Bucket
- Rotary Beacon



Unit mm

All parameters within (±) 2.5% of the specified values. Specification are subject to change without notice
LiuGong standard and optional equipment may vary from region to region. Please consult your LiuGong dealer for information specific to your area.

Corporate office
LiuGong India Pvt. Ltd.
82, Okhla Industrial Estate, Phase III
New Delhi- 110020
Tel.: 011- 47272200
www.liugong.com
liugongindia.com

Plant Address:
Plot No. 163, Industrial Area,
Sector - III, Pithampur,
Dist. - Dhar, Madhya Pradesh - 454774
Tel.: 07292-416700

Mera LiuGong Mera Vishwas
1800 1033 852