



BUILT IN **BHARAT**

Engine	Yuchai
Gross Power	168 kW (225 Hp)
Operating Weight	18,350 kg
Payload Capacity	5,500 Kg
Standard Bucket	3.5 m ³

856H **MAX**
WHEEL LOADER

TOUGH WORLD. TOUGH EQUIPMENT.

856H MAX SPECIFICATIONS >>>



OPERATING WEIGHT 18350 KG

BUCKET RANGES

Heavy duty big buckets are designed to offers high output, breakout force and fill factor.

Light Material Bucket	5.2 m ³ / 5.6 m ³
General Purpose Bucket	3.5 m ³
Rock Bucket	2.5 m ³ / 2.7 m ³ / 3.0 m ³

ENGINE

YuChai 6 cylinder, CRDi, Turbocharged, intercooled Engine Designed and Developed for LiuGong Wheel Loaders.

Manufacturer	Yuchai
Model	YCK09230-B460
Emmission Regulation	CEV Stage IV
Gross Power	168 kW (225 hp) @ 2000 rpm
Peak Torque	1200 N-m @ 1300 rpm
Displacement	9.41 L
Aspiration	Turbocharged, Intercooled
Number of Cylinders	6

TRANSMISSION

LiuGong's own Heavy Duty Transmission

Make & Model	LiuGong BS307E
Transmission Type	Powershift Transmission
Torque Converter	Twin Turbine, Four Members
Number of Speed	Forward 2 / Reverse 1
Forward Speed F1 / F2	11.5 / 37 Km/hr
Reverse: R1	16.7 Km/hr

AXLES

Make	LiuGong
Model & Type	Dry Type Axle Planetary Hub Reduction
Axle Oscillation	Front Fixed and Rear $\pm 10^\circ$

AIS160 COMPLIANT

Enhanced safety and performance as per AIS160 compliant

BRAKE SYSTEM

Service Brake	4 Wheel applied air over hydraulic with independent circuit for front & rear axle
Parking Brake	Drum Brake Mechanical Actuation
Secondary Brake	Manually Applied on Low Pressure

HYDRAULIC SYSTEM

Efficient hydraulic system with tandem pump for work implementation system and steering system. generates high flow rate for optimum performance.

Main Pump Type	Gear Pump
Main Relief Pressure	22 Mpa
Main Pump Flow	369 LPM
Cycle Time	9.5 Sec
Control	Single Pilot Lever
Cylinders	Double Acting Cylinder

STEERING SYSTEM

Steering Type	Articulation
Pump Type	Gear Pump
Steering Relief Pressure	18 Mpa
Steering System flow	176 LPM
Maximum Articulation Angle	$\pm 38^\circ$

CABIN

Ergonomically designed AC cabin has 04 working cab lights, standard front guard, wiper, adjustable seat, single joystick operated hydraulics with hand rest, music system, cup holder, large instrument panel for - (DEF level gauge, fuel level gauge, turn indicators, engine tachometer engine coolant temperature gauge, torque converter oil temperature gauge various status and warning indicators). LiuGong I-link, removable floor mat, laminated front glass, 02 external mirrors, Improved visibility and less operator fatigue make excellent working environment for the operator.

ELECTRICAL SYSTEM

Enhanced electrical system having water and dust proof connectors with IP67.

System Voltage	DC 24V
----------------	--------

LOADER PERFORMANCE WITH STANDARD BUCKET 3.5 M³

Tipping Load- Straight	15877 kg
Tipping Load- Full Turn	13878 kg
Bucket Breakout Force	175 kN
A-Hinge Pin Height, Fully Raised	4162 mm
B-Dumping Height, Fully Raised	3045 mm
C-Dumping Reach, Fully Raised	1209 mm
D-Max. Digging Depth	90 mm
E-Min. Ground Clearance	423 mm
G-Wheel Base	3320 mm
H-Overall Height (Top of Cab)	3500 mm
J-Tread Width	2230 mm
K-Overall Width (Outside of Wheel)	2730 mm
L-Overall Length (Bucket on Ground)	8370 mm
W-Overall Width (Outside on Bucket)	2970 mm
P-Departure Angle	30°
S1-Bucket Rollback at Ground Level	43°
S2-Bucket Rollback at Carry	48°
S3-Bucket Roll Back at Maximum	62°
S4-Maximum Dump Angle at Full Height	44°
R1-Turning Radius (Outside of Bucket)	6500 mm

TIRES

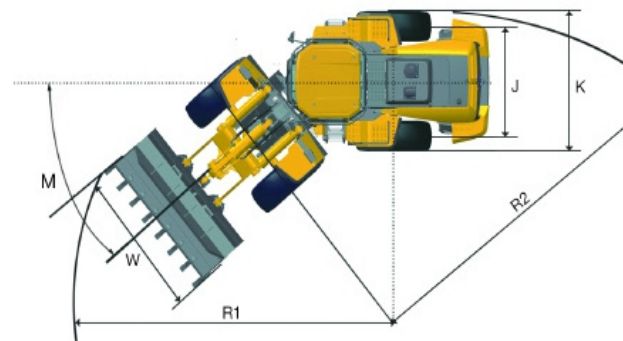
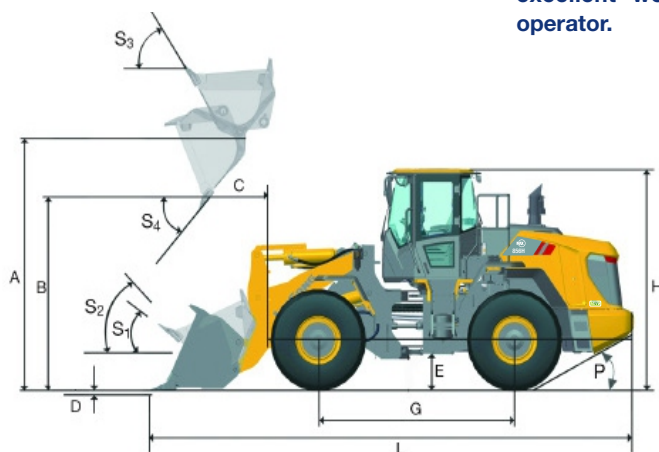
Tire Size	23.5 R25
-----------	----------

SERVICE CAPACITIES

Fuel Tank	300 L
Engine Oil	26 L
Adblue	25 L
Cooling System	50 L
Transmission & Torque Converter	45 L
Hydraulic System	225 L
Axle Oil Each	33 L

OPTIONAL

- Certified ROPS/FOPS Cabin
- DGMS KIT
- Automatic Centralized Lubrication
- Automatic Fire Suppression System
- Rear View Camera



Metric

All parameters within (+) 2.5% of the specified values. Specification are subject to change without notice
LiuGong standard and optional equipment may vary from region to region. Please consult your LiuGong dealer for information specific to your area.

Corporate office
LiuGong India Pvt. Ltd.
82, Okhla Industrial Estate, Phase III
New Delhi- 110020
Tel.: 011- 47272200
www.liugong.com
india@liugong.com

Plant Address:
Plot No. 163, Industrial Area,
Sector - III, Pithampur,
Dist. - Dhar, Madhya Pradesh - 454774
Tel.: 07292-416700

Specifications and designs are subject to change without notice. Machines shown may include optional equipment.

Mera LiuGong Mera Vishwas
1800 1033 852

08/2021 LIPL