

922E XD SPECIFICATIONS >>>



ENGINE

Make	CUMMINS
Engine Model	6BTAA5.9
Gross Power	148 hp @ 2,000 rpm
Peak Torque	626 N-m @ 1,300 rpm
Displacement	5.9 L
Aspiration	Turbocharged, CAC

HYDRAULIC SYSTEM

Main Pump Flow	2 x 224 LPM
Pilot Pump Flow	19 LPM
Relief Valve Setting	
Implementation	34.3/37.3 MPa
Travel Circuit	34.3 MPa
Swing Circuit	28.5 MPa
Pilot Circuit	3.9 MPa

SWING SYSTEM

Swing Speed	12 rpm
Swing Torque	68591 N.m
Swing Motor	Axial Piston Motor
Swing Reduction	Planetary Gear
Swing Bearing	Lubrication Grease Bathed

BUCKETS

HD Bucket	1.0 m ³
GP Bucket	1.15 m ³
Light Duty Bucket	1.25 m ³

SERVICE CAPACITIES

Fuel Tank	420 L
Engine Oil	20 L
Final Drive	3.4 Lx2
Swing Drive	4.6 L
Hydraulic Tank	180 L

UNDERCARRIAGE

Track Shoe Each Side	46
Track Guard	2
Track Shoe Width (Triple Grouser)	600 mm
Bottom Rollers Each Side	7
Top Rollers Each Side	2

DRIVE SYSTEM

Travel Speed (High/Low)	(5.1/3.0) Km/h
Gradeability	(35°) 70%
Max. Drawbar Pull	212 kN
Drive Motor	Axial Piston Motor
Drive Reduction	Planetary Gear

ELECTRICAL SYSTEM

Voltage	24 V
Battery	12 V, 100Ah x2
Working Lights	5

OPTIONAL

LC Configuration	
Operating Weight	22,600 kg
Undercarriage Length	4460 mm
Trackshoe (Each Side)	600 mm x 49
Bottom Roller (Each Side)	8
Top Cabin Guard	
RB Pipeline	
I-Link (GPS)	

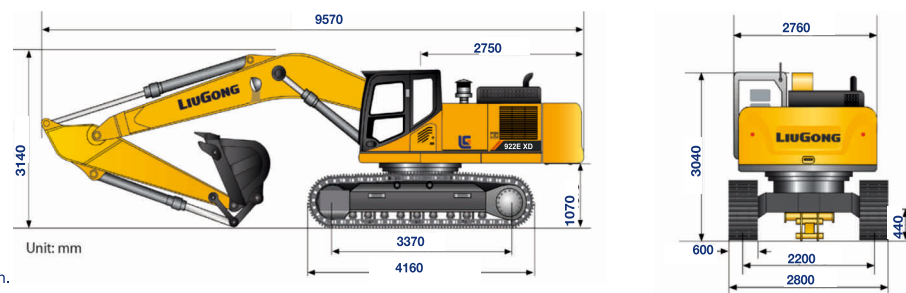
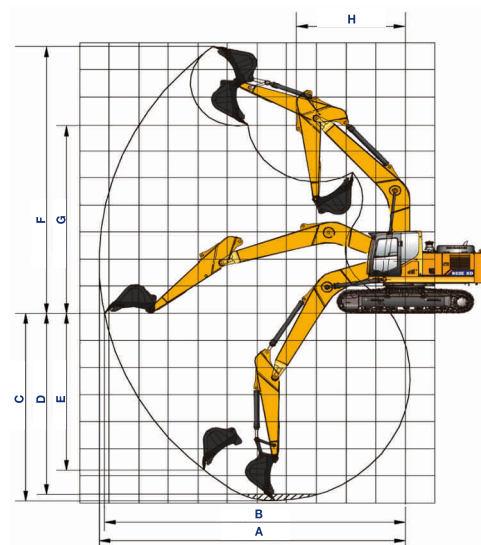
OPERATING WEIGHT

Operating Weight	22,000 kg
Shoe Ground Pressure	48.2 kPa

WORKING RANGE

Boom Length	5,710 mm
Arm Length	2,400 mm
A Max. Digging Reach	9,328 mm
B Max. Digging Reach on Ground	9,136 mm
C Max. Digging Depth	6,100 mm
D Max. Digging Depth 2.44m (8')	5,820 mm
E Max. Vertical Wall Digging Depth	4,408 mm
F Max. Cutting Height	9,464 mm
G Max. Dumping Height	6,832 mm
H Min. Front Swing Radius	3,064 mm
Bucket Breakout Force (ISO)	158 kN
Arm Breakout Force (ISO)	125 kN

WORKING DIMENSIONS (Reference Bucket - 1.15 m³)



BUILT IN BHARAT

Excellence Series

Engine	Cummins 6BTAA5.9
Gross Power	148 hp @ 2,000 rpm
Bucket Capacity	1.0 m ³ HD/1.15 m ³ GP
Digging Depth	6,100 mm
Operating Weight	22,000 kg
Cabin	Air Conditioned

922E XD EXCAVATOR

Corporate office
LiuGong India Pvt. Ltd.
82, Okhla Industrial Estate, Phase III
New Delhi- 110020
Tel.: 011- 47272200
www.liugong.com
india@liugong.com

Plant Address:
Plot No. 163, Industrial Area,
Sector - III, Pithampur,
Dist. - Dhar, Madhya Pradesh - 454774
Tel.: 07292-416700

Mera LiuGong Mera Vishwas
1800 1033 852

Specifications and designs are subject to change without notice. Machines shown may include optional equipment.

08/2021 LUP/L

TOUGH WORLD. TOUGH EQUIPMENT.

DESIGNED TO DELIVER HIGH EFFICIENCY, COMFORT AND PERFORMANCE

EXTRA REINFORCED STRUCTURES

Xtreme Duty Arm & Boom



Self Lubricating Bushes

Reinforced Undercarriage



HD Track Shoe

HD Track Guide

Reinforced Idler Socket

EXCELLENT PERFORMANCE

HD Bucket



Lip Shroud

Wing Shroud

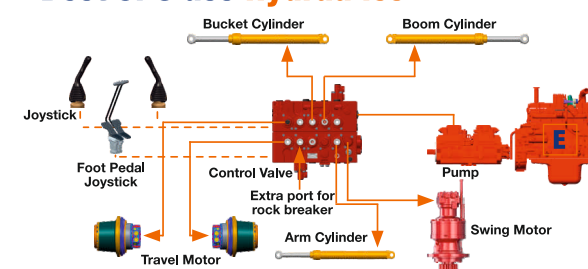


Powerful Engine 148hp Auto Idle



6 Working Modes

Best of Class Hydraulics



Intelligent Power Control (IPC)

Boom Priority

Arm & Boom Regeneration



ERGONOMICALLY DESIGNED CABIN

Transparent top window

Smooth Lever

Bluetooth enabled music



9 Vents for cooling

EASY MAINTENANCE & SAFE OPERATIONS



Centralised Greasing



Wide Windows



AC Filter Fuse & Relayboard



Flange Connector

