

 **LIUGONG**

975E HD EXCAVATOR

COMPREHENSIVE MINING SOLUTIONS



TOUGH WORLD. TOUGH EQUIPMENT.

PERFORMANCE

- Powerful Cummins Engine for **Best in class Performance**
- Superior Breakout Forces - **High Digging Capabilities**
- Large Buckets - **Dig More Earn More**
- Power of Dual swing motor - **Faster cycle time**
- Large Undercarriage - **Excellent Machine Stability**

EFFICIENCY

- High Fuel Efficiency - **Lowest fuel per unit work**
- Efficient Hydraulic system - **Efficient Power Utilization**
- Hydraulically Operated Variable Speed Cooling Fan
- Precise and Efficient Computer Aided Power Control

RELIABILITY

- World Renowned and Proven Powertrain Components
- Heavy Duty Structure with Stress relieved Steel and Castings
- Heavy Duty Undercarriage for all Rough Terrains

COMFORT

- Smart Cab with Optimized Space
- Best in Class Visibility
- Automatic climate control 9 air cooling vents

MAXIMUM UPTIME

- Easily accessible service points
- Side Walkway for Safe Serviceability
- Reversible cooling Fan
- Centralised Greasing - Simplified Maintenance



HIGHEST OUTPUT

+



HIGH UPTIME

+



LOW TCO

=



HIGH ROI



HIGH PERFORMANCE WORKING HARDER AND FASTER

The 975E HD digs, swings and loads using the most efficient technology and its improved stability, tractive force and Power contributes in its quick cycle and matchless star performance. 975E HD's outstanding digging force gets the job done whether you're working at a any rough application.



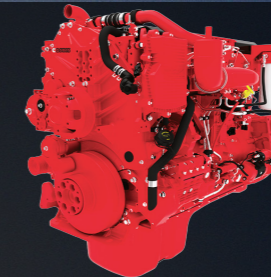
The intelligent combination of powerful Hydraulics, Fuel Economy enhancing technologies helps 975E HD to perform best to provide ultimate satisfaction to the end user.

LET'S PROVE

SUPERIOR DIGGING AND LIFTING FORCE

Powerful Engine

- Cummins QSX15 Engine
 - Turbocharge (VGT), air to air inter cooler.
 - Electronically Controlled Direct Injection
- Efficient but simple**



Large Bucket

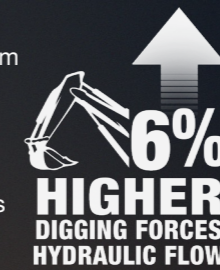
975E HD's heavy-duty Large bucket is built using wear resistant plates made out of reinforced high quality durable materials.

- HD Bucket - 5.6 cum



Powerful Hydraulics

Advance electrohydraulic system uses intelligent technology to control on-demand flow and reduces internal losses in the hydraulic circuit. This provides superior digging force, shortens cyclotime and increases controllability.



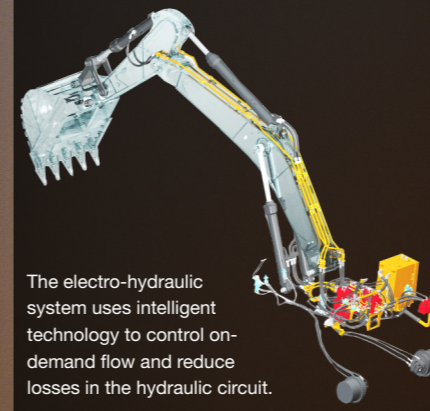
Higher Stability

975E HD's wider track gauge contributes in better stability and for a well-balanced machine when operating in adverse terrains.



FAST AND PRECISE CYCLE TIME

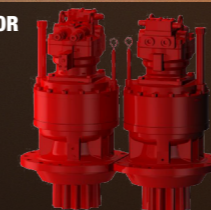
INTELLIGENT ELECTROHYDRAULIC SYSTEM



The electro-hydraulic system uses intelligent technology to control on-demand flow and reduce losses in the hydraulic circuit.

DUAL SWING MOTOR

Faster cycle time



HIGH EFFICIENCY

MOVING MORE FOR LESS

975E HD strikes the most important factor in TCO which is fuel efficiency and contributes in the profitability by being both productive and efficient. Power, speed, and durability combined with innovative technology result in an optimum machine design that makes a reliable contribution to cost-effective success.



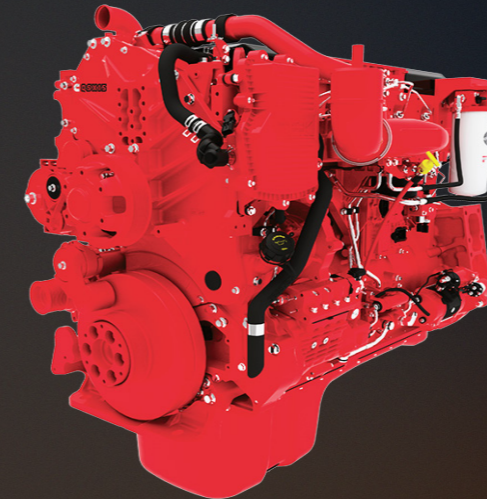
OUTSTANDING EFFICIENCY

High Efficiency in extreme duty applications with reduced fuel consumption & High Output helps User to get reduced TCO and more profitability.

LET'S PROVE

FUEL EFFICIENT ENGINE

- Inline 6-cylinder, turbocharger, electronically controlled direct injection and charge air cooling.
- Delivers best in all RPM ranges most efficiently.

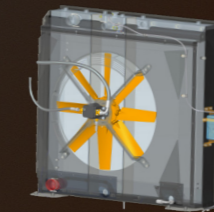


EFFICIENT HYDRAULIC SYSTEM - Efficient Power Utilization



HYDRAULICALLY DRIVEN COOLING FAN

Hydraulically driven reversible variable speed fan employed to reduce parasitic load on the engine and improve fuel consumption.



975E HD's efficient Electro-hydraulic system allows more work to be done in lesser time because of its intelligent electronic control and combined pump flow to the bucket for smooth operation, improved cycle time and increased fuel efficiency. The result is maximum controllability and efficiency according to the specific application.

SMART FUEL ECONOMY

The intelligent combination of powerful digging force, swing torque and lifting performance, Maximize the fuel economy by intelligently regulating its speed as per the actual work requirement.



1 second : If no hydraulic request signal detected from the joystick, the engine speed is automatically dropped by 100 RPM.



3 seconds : if no activity is detected over 3 seconds engine speed automatically goes down leads to high efficiency, fuel saving & better control ability.

HIGH RELIABILITY

READY TO WORK WHEN YOU NEED IT

Reliable Components to achieve precise controlling of work, with extra reinforced structures, manufactured in house with advanced robotic manufacturing, to take on the challenge of extreme duty applications.



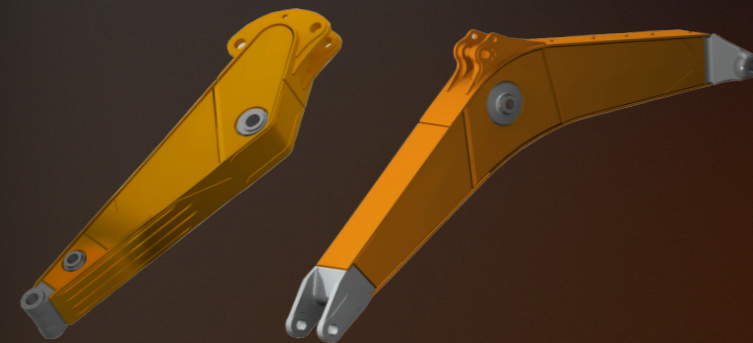
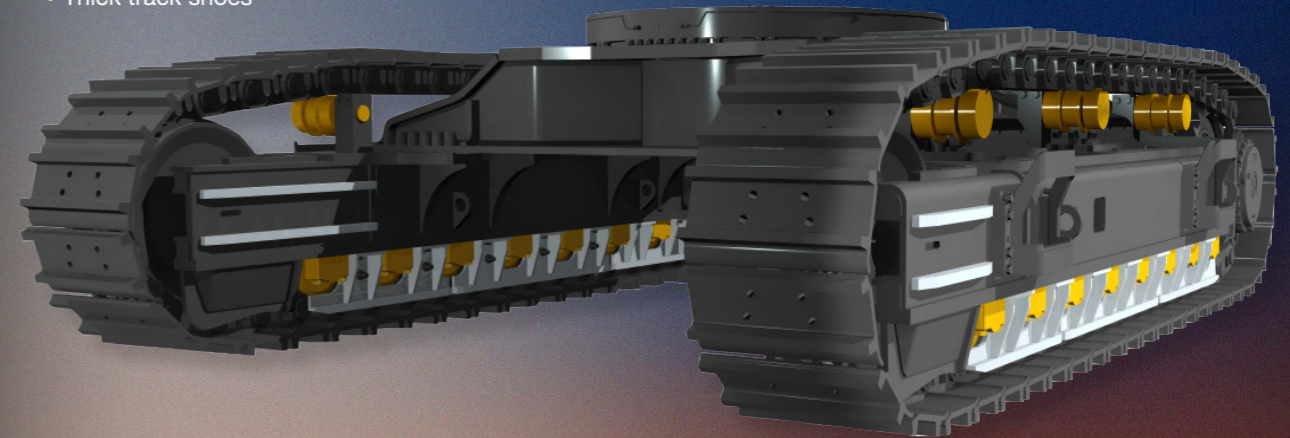
RELIABLE 975E HD

The use of thick, high-tensile strengthened, stress-relieved steel plates, makes the structures on E-series excavators, extra strong & reliable.

LET'S PROVE

STRENGTHENED UNDERCARRIAGE

- The reinforced undercarriage is built to withstand tougher conditions for improved durability and reliability.
- Extra stability with high track gauge, 8 heavy duty track rollers and 3 carrier Rollers.
- Thick track shoes



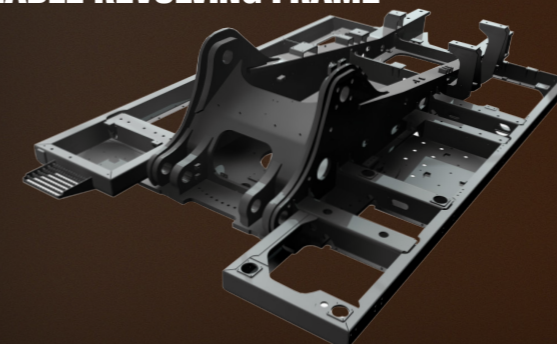
XTREME DUTY BOOM

- High tensile strengthened steel
- Single piece cast pivot ends
- Extra reinforced side plates
- Single piece top & bottom plates

XTREME DUTY ARM

- High tensile strengthened steel
- Wear resistant vertical bars

RELIABLE REVOLVING FRAME



5.6 m³ HD BUCKET



OUTSTANDING COMFORT JUST LIKE HOME

The cab design is optimally adapted to the operator's day-to-day requirements. The roomy and ergonomic operator's cab offers the perfect conditions for fatigue-free, focused work to optimize productivity.



CLEAR VISIBILITY

975E HD's ergonomically designed cabs ensures no obstacles should disturb the operator's vision throughout the operation and enhance his confidence to do the job with more safety which impacts in improved cycle times and maximizing the output.

LET'S PROVE

A SAFER CAB

- Ergonomical cab with wide Spacious interior.
- It's a clearer cab with best in class visibility.
- 290 degree blind spot behind the driving position has been removed completely.

A SMARTER CAB

- Controls are intelligently positioned for operator's ease and convenience
- A multi-functional display screen delivers real-time information to the operator.

A COOLER CAB

- Airflow and temperature controls also enhanced.
- Rear integrated air conditioning and a fully pressurized cab.

A QUIETER CAB

- We have Reduced in-cab noise by 10%.
- We've reduced vibrations and improved the operator's seat for more comfort.

ADVANCED CLIMATE CONTROL

An advanced climate control system creates the right environment in any weather.



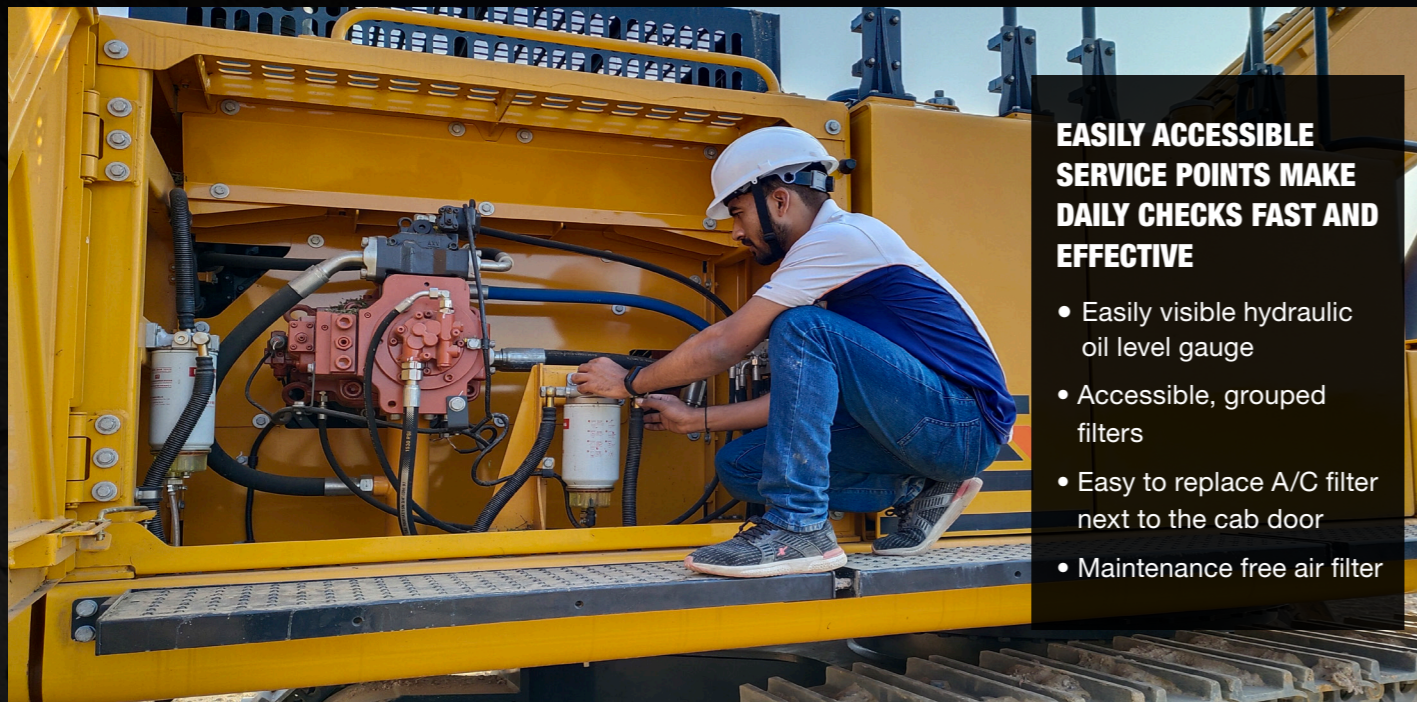
LARGE LCD MONITOR

The easy-to-read, full-color LCD monitor displays all the critical information your operator needs, including working mode, hydraulic oil temperature, hydraulic pressure and service intervals.



MAINTAINABILITY

SERVICE : IF EASY, IT GETS DONE



EASILY ACCESSIBLE SERVICE POINTS MAKE DAILY CHECKS FAST AND EFFECTIVE

- Easily visible hydraulic oil level gauge
- Accessible, grouped filters
- Easy to replace A/C filter next to the cab door
- Maintenance free air filter

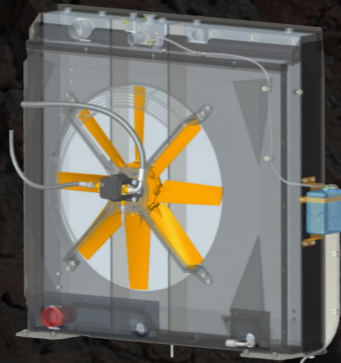
ON BOARD MONITORING

With onboard monitoring, the operator can check the machine's vital signs without leaving his seat. Using the LCD display, the operator can easily check oil temperatures and pressure levels, receive service interval alerts and access other information that contributes to simple maintenance and servicing of the machine.



REVERSIBLE COOLONG FAN

Smart reversal technology with the back blowing function can clean the radiator core to ensure efficient heat dissipation.



QUICK SERVICEABILITY



SIDE WALKWAYS



SPECIFICATIONS

OPERATING WEIGHT 75,000 kg

Operating weight includes coolant, lubricants, full fuel tank, cab, standard shoes, boom, arm, bucket and operator 75 kg.

BUCKET CAPACITY 5.6 m³

ENGINE

Description

Cummins EPA Tier 3 / EU Stage IIIA, inline 6-cylinder, turbocharger, electronically controlled direct injection.
Air cleaner: Cummins direct flow air filter.
Cooling system: Charge-air cooler (CAC)

Emission rating	EPA Tier 3 / EU Stage IIIA
Engine manufacturer	Cummins
Engine model	X15
Aspiration	Wastegate Turbo (WGT)
Charged air cooling	Aftercooler
Cooling fan drive	Hydraulic & Direct
Displacement	15 L
Rated speed	1,800 rpm
Engine output - rated	524 hp @ 1,800 rpm
Maximum torque	2,373 N·m @ 1,400 rpm
Bore × Stroke	137 × 169 mm

UNDERCARRIAGE

Track shoe each side	48
Link pitch	260.4 mm
Shoe width, double grouser	650 mm
Bottom rollers each side	8
Top rollers each side	3

SWING SYSTEM

Description

Planetary gear reduction driven by high torque axial piston motor, with oil disk brake. Swing parking brake resets within five seconds after swing pilot controls return to neutral.

Swing speed	7.4 rpm
-------------	---------

HYDRAULIC SYSTEM

Main pump

Type	Two variable displacement piston pumps
Maximum flow	2 × 476 L/min

Pilot pump

Type	Gear pump
Maximum flow	30 L/min

Relief valve setting

Implement	34.3 / 37.3 MPa
Travel circuit	34.3 MPa
Slew circuit	26.5 MPa
Pilot circuit	3.9 MPa

Hydraulic cylinders

Boom Cylinder – Bore × Stroke	Φ200 × 1,720 mm
Arm Cylinder – Bore × Stroke	Φ215 × 1,935 mm
Bucket Cylinder – Bore × Stroke	Φ210 × 1,415 mm

ELECTRIC SYSTEM

System voltage	24 V
Batteries	2 x 12 V
Alternator	24 V - 100 A
Start motor	24 V - 9 kW

SERVICE CAPACITIES

Fuel tank	1,100 L
Engine oil	46 L
Final drive (each)	20 L
Swing drive (each)	14 L
Cooling system	72 L
Hydraulic reservoir	360 L
Hydraulic system total	680 L

SOUND PERFORMANCE

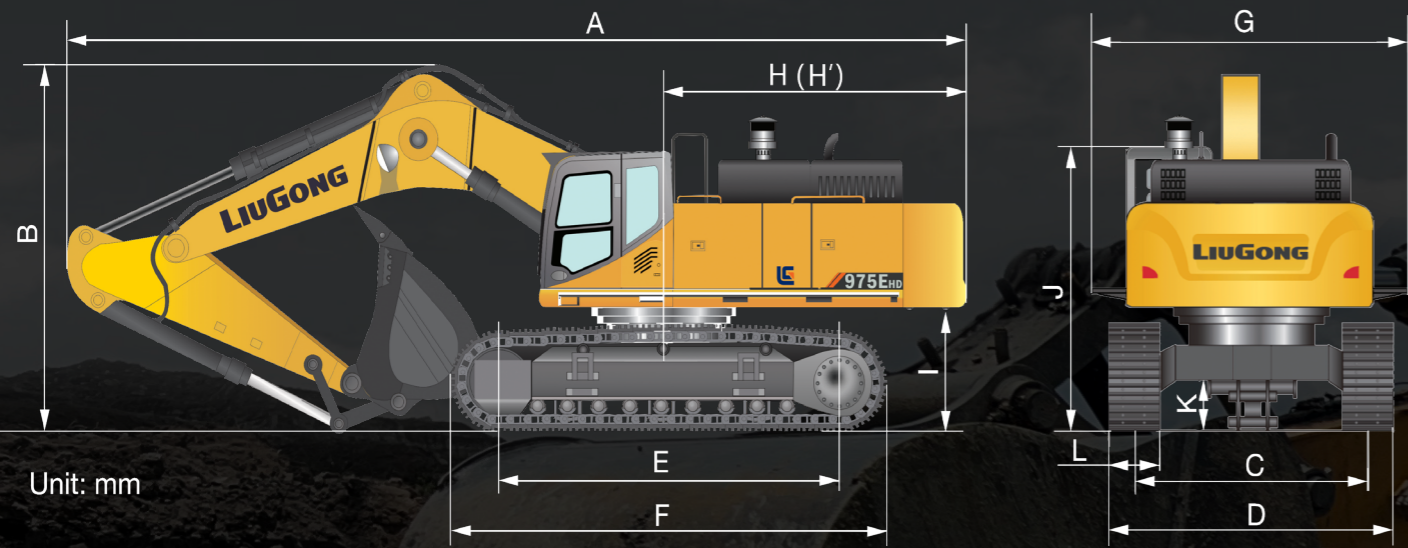
Interior sound power level (ISO 6396)	71 dB(A)
Exterior sound power level (ISO 6395)	107 dB(A)

DRIVE AND BRAKES

Description

2-speed axial piston motors with oil disk brakes. Steering controlled by two hand levers with pedals.

Travel speed	4.7 / 3.0 km/h
Gradeability	35°/70%
Max. drawbar pull	495 kN



Unit: mm

DIMENSIONS

Boom	6,600 mm
Arm Options	2,900 mm
A Shipping Length	12,630 mm
B Shipping Height – Top of Boom	4,710 mm
C Track Gauge	*3,350 mm / 2,720 mm
D Undercarriage Width – 650 mm shoes	*4,000 mm / 3,360 mm
E Length to Center of Rollers	4,750 mm
F Track Length	5,981 mm
G Overall Width of Upper Structure	**4,260 mm / 3,390 mm
H Tail Swing Radius	4,490 mm
I Counterweight Ground Clearance	1,495 mm
J Overall Height of Cab	3,620 mm
K Min. Ground Clearance	867 mm
Track Shoe Width	650 mm

* Adjustable gauge

** With aisle

MACHINE WEIGHT AND GROUND PRESSURE

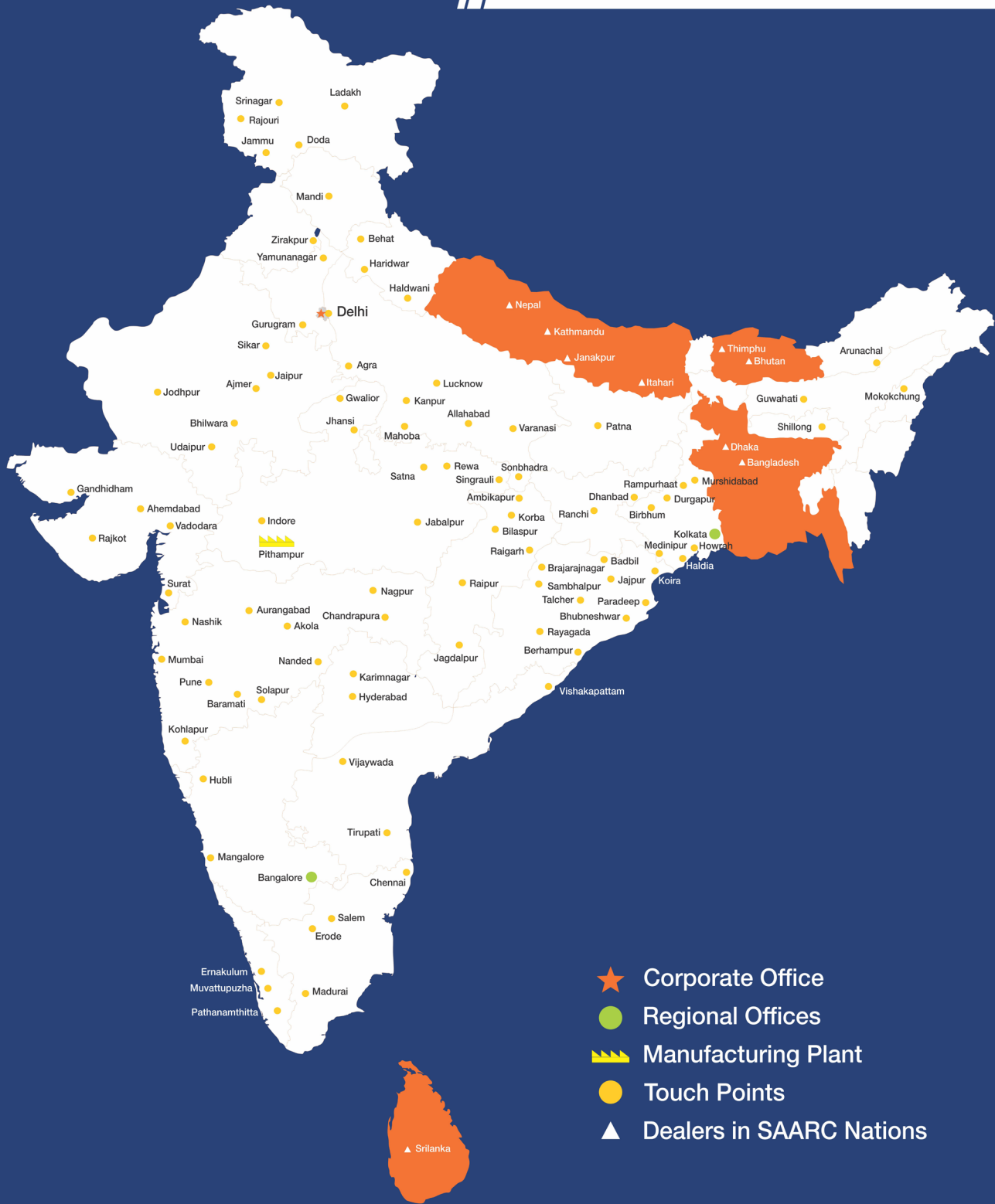
Operating weight	Overall width
75,000 kg	6.6 m boom/2.9 m arm/ 5.6 m ³ bucket/12,500 kg counterweight/650 mm shoe width
	4,260 mm



WORKING RANGE

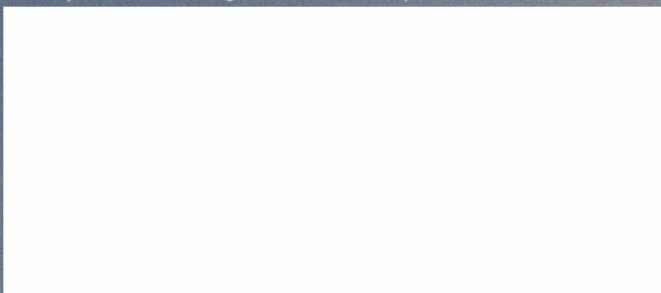
Boom Length	6,600 mm
Arm Length	2,900 mm
A. Max. Digging Reach	11,450 mm
B. Max. Digging Reach on Ground	11,170 mm
C. Max. Digging Depth	7,180 mm
D. Max. Digging Depth, 2.44 m (8') level	7,030 mm
E. Max. Vertical Wall Digging Depth	4,080 mm
F. Max. Cutting Height	10,950 mm
G. Max. Dumping Height	7,030 mm
H. Min. Front Swing Radius	4,900 mm
Bucket Digging Force (ISO)	397/425 kN
Arm Digging Force (ISO)	349/372 kN
Bucket Capacity	5.6 m ³





Mera LiuGong Mera Vishwas
1800 1033 852

Always a LiuGong dealer near you.



Corporate Office:
 101, Okhla Phase III, New Delhi- 110020, Tel: 011-47272200
 india@liugong.com

Manufacturing Plant:
 Plot No. 163, Industrial Area, Sector-III, Pithampur
 Dist.- Dhar, Madhya Pradesh- 454774, Tel: 07292-416700

www.liugongindia.com

Like and follow us:

