

# M100E SPECIFICATIONS >>>



## MILLING DRUM

Milling Width	1000 mm
Milling Depth	0-220 mm
Drum Dia. With Tool	860 mm
Tool Spacing	18 mm
No. of Tool	72

## ENGINE

Manufacturer	Cummins
Model	QSB5.9
Gross Power	210 hp @ 2,200 rpm
Peak Torque	820 N-m @ 1,600 rpm
Cooling Type	Water
Number of Cylinders	6
System Voltage	24 V

## DRIVING PROPERTIES

Travel Speed	8 km/h(33 m/min)
Milling Speed	2 km/h(33 m/min)
Theoretical Grade-ability	>20%
Ground Clearance	175 mm

## CONVEYOR SYSTEM

Belt Width	400 mm
Theoretical Conveyor Capacity	90 m³/h

## TYRES

Tire Form	Solid Rubber
Front Tire Size	250 x 660 mm
Rear Tire Size	250 x 660 mm

## WEIGHT

Max. Operating Weight	15,000 kg
Load on Front Wheel	5,200 kg
Load on Rear Wheel	9,800 kg

## ELECTRICAL SYSTEM

Electrical Power Supply	24 V
-------------------------	------

## SERVICE CAPACITIES

Fuel Tank	360 L
Hydraulic Fluid Tank	120 L
Water Tank	800 L

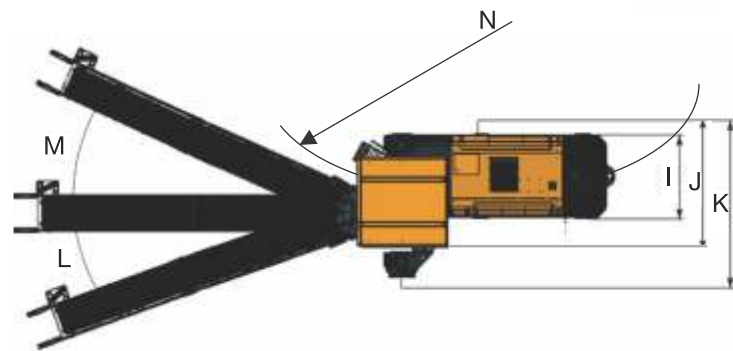
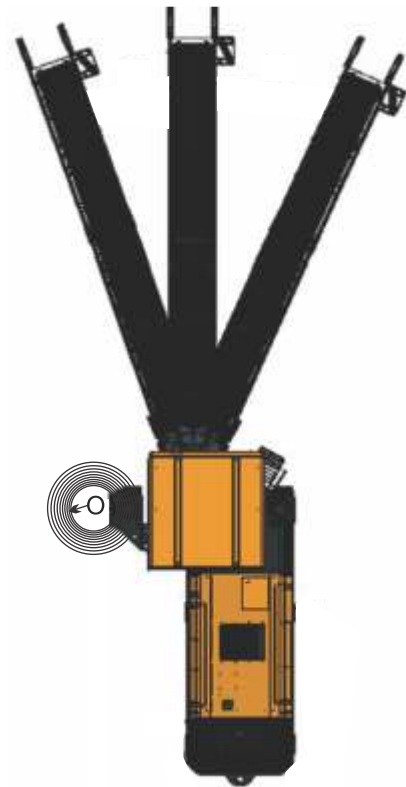
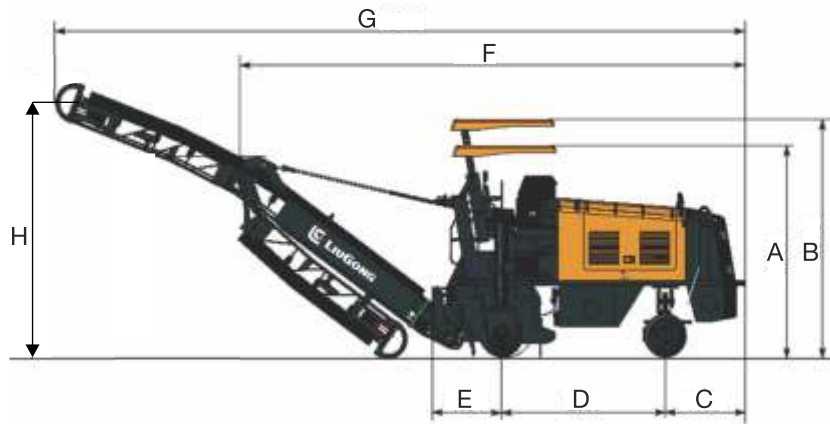
## SHIPPING DIMENSIONS

Shipping Dimension	7,920x2,400x2,940 mm
--------------------	----------------------

## WORKING DIMENSIONS

A	B	C	D	E	F
2,940	3,370	1,168	2,505	1,094	8,160
G	H	I	J	K	L
10,360	3,700	1,400	2,070	2,400	20°
M	N	O			
25°	3,675	1,350			

Unit: mm



All parameters within (±) 2.5% of the specified values. Specification are subject to change without notice. LiuGong standard and optional equipment may vary from region to region. Please consult your LiuGong dealer for information specific to your area.

**Corporate office**  
LiuGong India Pvt. Ltd.  
101, Okhla Industrial Estate, Phase III  
New Delhi- 110020  
Tel.: 011- 47272200  
www.liugong.com  
india@liugong.com

**Plant Address:**  
Plot No. 163, Industrial Area,  
Sector - III, Pithampur,  
Dist. - Dhar, Madhya Pradesh - 454774  
Tel.: 07292-416700

Mera LiuGong Mera Vishwas  
**1800 1033 852**

Specifications and designs are subject to change without notice. Machines shown may include optional equipment.

12/2022 LPL

Engine Cummins QSB5.9  
Gross Power 210 HP @ 2,200 rpm  
Max Operating Weight 15,000 kg  
Milling Width 1000 mm  
Milling Depth 220 mm

**M100E**  
**COLD MILLING MACHINE**

**TOUGH WORLD. TOUGH EQUIPMENT.**

# M100E COLD MILLING MACHINE



## COST EFFECTIVE MILLING PRECISION

A new benchmark concrete and asphalt cutting technology for performance, safety and operation of milling precision. LiuGong M100E, redesigned to provide higher standard in terms of lower fuel consumption & higher productivity which ensure maximum profits to customer. We always have right technology at hand for every application for customer acceptance from us.

### LEVELLING SYSTEM

Advanced levelling system which control milling depth while working on different job sites. As an innovative and highly practical feature, it permits signals to be displayed simultaneously.

### CONVEYOR SYSTEM

High capacity folding conveyor system with dust suppression function which meet municipal work. It's easy to assemble & disassemble with flexible loading regardless of the job situation.

### PRODIGIOUS MANOEUVRABILITY

Extremely small turning radius that allow vehicle passes well in narrow space. Minimum side clearance and maximum curb clearance on both side of the drum enable quick and accurate flush cutting along curbs.

### TREMENDOUS MOBILITY

Powerful four wheel drive with maximum traction and large ground clearance which ensure maximum gradeability on difficult ground and allows quick & flexible relocations between job sites.

### EFFICIENT OPERATION

Milling Width of 1000mm and maximum cutting depth of 220mm that ensure milling operation tight to adjacent structure such as curbs and walls and smooth milled surface result from a long wheel base.

### FUEL EFFICIENT

HTLR, 210HP, power intelligent cummins engine ensure excellent tuning with powertrain for optimum performance & fuel efficiency.

### EASE OF MAINTENANCE

Convenient & easy access to lubricating points, filter and other service aspects. Vast after sales network across pan India.

### EXCELLENT VISIBILITY

Excellent view to milling edge and important work areas from the operator seat that ensure full illumination and machine control.

### COST EFFECTIVE

Fast mobilization speed of 8 km/hr. saves time and cost which valued to customer through high return on investment by ensuring high saving at low fuel consumption and lower engine servicing cost.

### MILLING DRUM ASSEMBLY

The optimized arrangement of the toolholders and smart tooling of the drum periphery ensure excellent milling power up to a depth of 220mm. Simple tool replacement guarantees that downtime of cold milling machines are kept to a minimum.

### E<sup>2</sup> - HYDRAULICS

Energy efficient hydraulics system which ensures excellent milling operation while working in tough application.

