



<b>Engine</b>	Cummins 4BT3.9
<b>Rated Power</b>	100 hp @ 2,000 rpm
<b>Standard Bucket Capacity</b>	0.65 m <sup>3</sup>
<b>Maximum Digging Depth</b>	5,080 mm
<b>Operating Weight</b>	13,500 Kg

# 914E EXCAVATOR

**TOUGH WORLD. TOUGH EQUIPMENT.**

# 914E SPECIFICATIONS >>>

## ENGINE

Manufacturer	CUMMINS
Model	4BT3.9
Rated Power	100 hp @ 2,000 rpm
Peak Torque	385 N·m @ 1,300 rpm
Number of Cylinders	4
Displacement	3.9 L

## UNDERCARRIAGE

Number of Shoes Per Side	44
Number of Upper Rollers Per Side	1
Number of Bottom Rollers Per Side	7

## HYDRAULIC SYSTEM

Main Pump Total Flow	2 x 120 L/min
Relief Pressure, Main	34.3 MPa

## SERVICE CAPACITIES

Fuel Tank	245 L
Engine Oil	14 L
Cooling System	21 L
Hydraulic Reservoir	130 L
Hydraulic System Total	200 L

## PERFORMANCE PARAMETERS

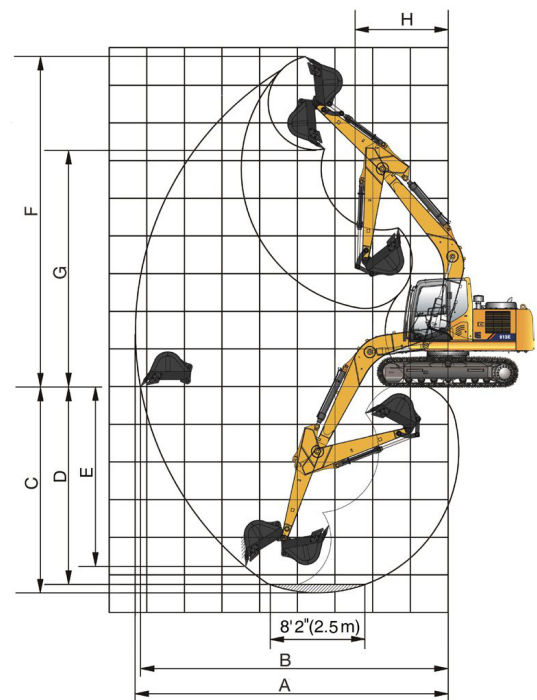
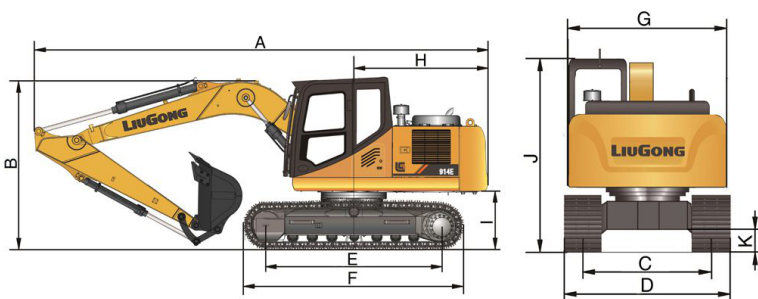
Operating Weight	13,500 kg
Std. Bucket Heaped Capacity (Referenced)	0.65 m <sup>3</sup>
Maximum Travel Speed	5.1 km/h
Swing Speed	12 rpm
Drawbar Pull	132 kN
Bucket Digging Force (ISO)	89.8 kN
ARM Digging Force (ISO)	73.5 kN

## WORKING RANGE

Boom Length	4,600 mm
Arm Length	2,100 mm
A Maximum Digging Reach	7,970 mm
B Maximum Digging Reach on Ground	7,835 mm
C Maximum Digging Depth	5,080 mm
D Maximum Digging Depth, 2.5m (8') Level	4,840 mm
E Maximum Vertical Wall Digging Depth	3,125 mm
F Maximum Cutting Height	8,550 mm
G Maximum Dumping Height	6,040 mm
H Minimum Front Swing Radius	2,335 mm

## DIMENSIONS

A Shipping Length	7,780 mm
B Shipping Height	2,940 mm
C Track Gauge	1,990 mm
D Undercarriage Width	2,490 mm
E Length to Center of Rollers	2,930 mm
F Track Length	3,666 mm
G Overall Width of Upper Structure	2,490 mm
H Tail Swing Radius	2,290 mm
I Counterweight Ground	960 mm
J Overall Height of Cab	2,900 mm
K Minimum Ground Clearance	450 mm



**Corporate office**  
**LiuGong India Pvt. Ltd.**  
 101, Okhla Industrial Estate, Phase III  
 New Delhi- 110020  
 Tel.: 011- 47272200  
 www.liugong.com  
 india@liugong.com

**Plant Address:**  
 Plot No. 163, Industrial Area,  
 Sector - III, Pithampur,  
 Dist. - Dhar, Madhya Pradesh - 454774  
 Tel.: 07292-416700

Specifications and designs are subject to change without notice. Machines shown may include optional equipment.

**LIUGONG CARE**  
**1800 1033 852**

06/2025 LIPL